



**TRANSFORMER.™**



# **ALLU TRANSFORMER** **PRODUCT CATALOGUE.**

[allu.net](http://allu.net)

**TRANSFORMING MORE  
THAN JUST PROFITS.**



# ABOUT OUR COMPANY.

ALLU attachments are designed to operate in demanding environments on demanding materials, so you can transform the way you work. For over 30 years our attachments have been known for their quality and reliability.

## IT TRANSFORMS...



**YOUR  
PROFITS**



**YOUR  
EFFICIENCY**



**YOUR  
CAP-EX**



**YOUR  
HEALTH & SAFETY**



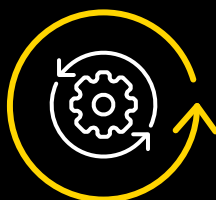
**YOUR  
WORKFORCE**



**YOUR  
MACHINES**



**YOUR  
WASTE**



**YOUR  
PROCESS**



**YOUR GREEN  
CREDENTIALS**

# 33

**YEARS  
EXPERIENCE**

# 30

**DISTRIBUTED  
IN OVER 30  
COUNTRIES**

# 100+

**ALLU DEALERS  
AROUND THE  
WORLD**







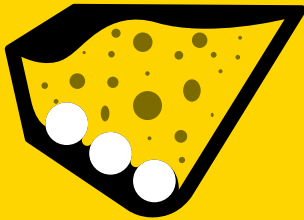
# WHY USE TRANSFORMER?

The ALLU Transformer is a hydraulic attachment for wheel loader, excavator or skid steer. And the good news is, it's here to make your life so much easier.

## HOW IT WORKS.

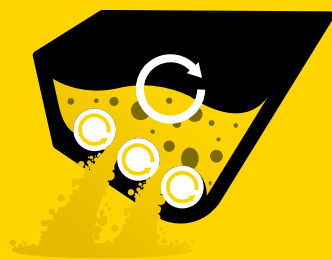
### PHASE ONE

- Start



### PHASE TWO

- Screening & crushing of material
- Normal drum rotation
- Optimal material flow and circulation
- Approx. 1/2 of full bucket



### PHASE THREE

- Reversed drum rotation
- Approx. 1/4 of full bucket



It all boils down to efficiency. With the Transformer, you no longer need to bring both a wheel loader/excavator and a crusher on site.

Instead, this is a bucket which screens, crushes, pulverizes, aerates, blends, mixes, separates, feeds and loads materials. And best of all, it transforms the materials you work with. So, construction debris becomes stone aggregate. This is technology which quite literally transforms everything around it. It's more productive, and more profitable.

With versatility at its very core, the Transformer will process just about anything you send its way. From topsoil, excavated soil and contaminated soil, to clay, peat, bark and compost.

And bio-waste, demolition waste and construction waste, to milled asphalt, coal, oil shale, and limestone.

Plus you can do it practically anywhere; this is an attachment which defines the word mobile.

And as the Transformer converts your base machine into a mobile processing plant, you can take great comfort in your reduced investment and operating costs. Your smaller carbon footprint and transportation costs. The overall reduction in fuel and energy, and the fact that there's now no need for electrics on site.

The Transformer is technology which will redefine your industry. More production, more mobility and greater efficiency. And all available now.



---

**"The ALLU Transformer is versatile, time-saving technology. Mix, aerate and crush in one go. It's equipment you'll wish you'd found sooner."**



**This is a bucket which screens, crushes, pulverises, aerates, blends, mixes, separates, feeds and loads materials. And best of all, it transforms the materials you work with. It's more productive, and more profitable.**

## **LANDSCAPING AND AGRICULTURE.**

The DL series Transformer makes the perfect attachment for landscaping and agricultural applications. From composting to aerating, top soil screening to waste and debris processing, all can be carried out on site and is truly mobile, offering you the versatility and flexibility you need to work more efficiently in the most challenging environments.

## **EARTHMOVING.**

When it comes to earth moving, use a Transformer attachment and your excavated soil will not need to be transported away and replaced with fresh soil. Not only does this result in substantial savings in material and transport costs, but no time is lost when waiting for replacement material. Plus, simultaneously, binders can be mixed, if the job requires stabilisation.

## **MINING.**

If you work in soft rock crushing or mining you'll be pleased to know that with Transformer, crushing and loading the raw material can be completed at the same time. The attachments reduce the need for buffer storage areas and material transportation. And with investment costs being lower than large stationary processing stations, transportation from one site to another being easy and fast, and the need for electrics being eliminated, there's plenty more to be pleased about, too.

---

# ALLU ATTACHMENTS & APPLICATIONS

With the widest range of screening buckets and screener crushers on the market, the Transformer range will fit almost any base machine size. Starting from our most compact ALLU DL Series, to the huge ALLU M Series which will fit up to 160Tn (154.4 US Tn), these are attachments which can screen and crush materials from 8 mm (0.59") to 150 mm (5.9") fragments. Making them ideal for many applications.







**TRANSFORMER.™**

# D-SERIES.



## MAIN APPLICATION AREAS.

- Waste material handling & processing
- Compost mixing and aerating
- Pipeline backfilling/padding
- Stabilising clay
- Crushing asphalt, minerals
- Cable backfill
- Environmental remediation
- Soil & gravel screening



Drum for screening





**ALLU Transformer D are reliable screening buckets for a variety of screening and crushing projects. Whilst their versatility sets them apart, they share the DL-series' use of our innovative fine-screening TS® drum construction with standard blades.**

With this assembly construction, the TS blades spin between screening combs and the end product size is defined by the space between the combs. This

construction is unique in that the fragment sizes can be changed by repositioning the screening combs.

You can get two end product fragment sizes with one unit with no additional costs.

## SPECIFICATIONS.

MODEL	EXCAVATOR		WHEEL LOADERS		VOLUME		OIL FLOW		WEIGHT	
	Tn	US Tn	Tn	US Tn	m³	cu yd	Lpm	Gpm	Kg	Lbs
DN 2-09	10-28	11.02-30.8	4-14	4.4-15.4	0.4-0.49	0.52-0.64	70-120	18.4-31.7	940	2072
DN 2-12	12-28	13.2-30.8	6-14	6.6-15.4	0.52-0.66	0.68-0.86	70-120	18.4-31.7	1130	2491
DN 2-17	15-28	16.5-30.8	7-14	7.7-15.4	0.76-0.99	0.99-1.29	70-120	18.4-31.7	1400	3086
DN 3-09	12-28	13.2-30.8	6-14	6.6-15.4	0.60-0.75	0.78-0.98	70-120	18.4-31.7	1220	2689
DN 3-12	16-28	17.6-30.8	7-14	7.7-15.4	0.79-1.01	1.03-0.9	95-160	25-42.2	1410	3108
DN 3-17	20-28	22-30.8	7-14	7.7-15.4	1.15-1.53	1.5-2.0	95-160	25-42.2	1760	3880
DS 3-12	16-35	17.6-38.5	8-22	8.8-24.2	0.83-1.04	1.09-1.36	95-160	25-42.2	1610	3549
DS 3-17	20-35	22-38.5	9-22	9.9-24.2	1.22-1.57	1.6-2.05	95-160	25-42.2	2000	4409
DS 3-23	24-35	26.4-38.5	12-22	13.2-24.2	1.61-2.10	2.11-2.75	120-200	31.7-52.8	2520	5555
DS 4-12	20-35	22-38.5	10-22	11-24.2	1.24-1.56	1.62-2.04	95-160	25-42.2	1930	4254
DS 4-17	24-35	26.4-38.5	12-22	13.2-24.2	1.82-2.38	2.38-3.11	120-200	31.7-52.8	2360	5202
DS 4-23	30-35*	33-38.5*	14-22	15.4-24.2	2.4-3.21	3.14-4.2	120-200	31.7-52.8	3020	6657
DH 3-12	18-45	19.8-49.6	8-30	8.8-33	0.85-1.07	1.11-1.4	140-235	36.9-62	1950	4298
DH 3-17	22-45	24.2-49.6	10-30	11-33	1.25-1.61	1.63-2.11	140-235	36.9-62	2400	5291
DH 3-23	26-45	28.6-49.6	14-30	15.4-33	1.65-2.16	2.16-2.83	140-235	36.9-62	2960	6525
DH 4-12	22-45	24.2-49.6	10-30	11-33	1.26-1.59	1.65-2.08	140-235	36.9-62	2280	5026
DH 4-17	27-45	29.7-49.6	14-30	15.4-33	1.85-2.43	2.42-3.18	140-235	36.9-62	2780	6108
DH 4-23	32-45	35.2-49.6	16-30	17.6-33	2.43-3.27	3.18-4.28	190-315	50.1-83.2	3490	7694
DH 4-27	36-45*	39.6-49.6*	18-30	19.8-33	3.02-4.12	3.95-5.39	240-400	63.4-105.6	4080	8994

\* Factory confirmation required

## OPTIONS.

DRUMS	OTHER
25/40/60 XHD X75/X100 TS 08 TS 16 TS 25 TS 35	Extra side Directional valve Drain line eliminator Drain line relief valve

**Drum for crushing and shredding**



**Drum for mixing and crushing**



**Drum for screening and crushing**



---

# ONE ALLU THREE FRAGMENT SIZES.

**ALLU TS structure enables three different fragment sizes from the same unit. Fragment size estimation is based on the distance set by the screening comb.**

The ALLU TS structure allows you to adapt your bucket for your screening needs quickly and effortlessly giving you the ability to have more versatile

processing. The TS structure has been developed with a self-cleaning system allowing for the best possible capacity even with wet material. We call this

innovative design a non-clogging system and is available across our entire TS range.



## BLADE MODELS



**TS Standard blade**  
For all screening applications.

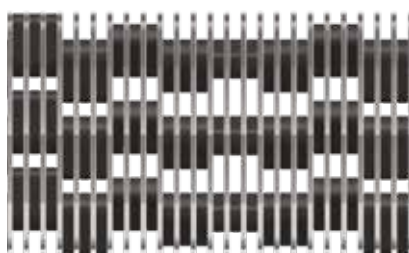


**TS Axe blade**  
For crushing applications.



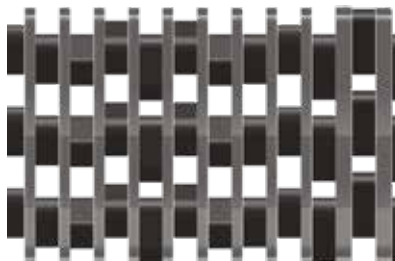
## FEATURE FOR ALLU D-SERIES.

### SINGLE BLADE



Single blade setup:  
blade sizes 8mm, 16mm,  
25mm, 35mm.

### DOUBLE BLADE



Double blade setup:  
blade sizes 16mm, 32mm,  
50mm, 70mm.

### TRIPLE BLADE



Triple blade setup:  
blade sizes 24mm, 48mm,  
75mm, 105mm.

## EXAMPLE APPLICATIONS AND FRAGMENT SIZES.



0-8 mm fragment size



0-50 mm fragment size



0-105 mm fragment size

### DOUBLING

TS 08 / 16  
TS 16 / 32  
TS 25 / 50  
TS 35 / 70



### TRIPLING

TS 08 / 24  
TS 16 / 48  
TS 25 / 75  
TS 35 / 105



## ALLU TS MODEL SPECIFICATIONS.

MODEL	EXCAVATOR		WHEEL LOADER		VOLUME		OIL FLOW		WEIGHT	
	Tn	US Tn	Tn	US Tn	m³	cu yd	Lpm	Gpm	Kg	Lbs
DN 2-12 TS	12-28	13.2-30.8	6-14	6.6-15.4	0.52-0.66	0.68-0.86	90-160	23.8-42.3	1160	2557
DN 2-17 TS	15-28	16.5-30.8	7-14	7.7-15.4	0.76-0.99	0.99-1.29	90-160	23.8-42.3	1420	3130
DN 3-12 TS	16-28	17.6-30.8	7-14	7.7-15.4	0.79-1.01	1.03-1.32	120-200	31.7-52.8	1440	3174
DN 3-17 TS	20-28	22-30.8	9-14	9.9-15.4	1.15-1.53	1.5-2.0	120-200	31.7-52.8	1830	4034
DS 3-12 TS	16-35	17.6-38.5	8-22	8.8-24.2	0.83-1.04	1.09-1.36	120-200	31.7-52.8	1630	3593
DS 3-17 TS	20-35	22-38.5	9-22	9.9-24.2	1.22-1.57	1.6-2.05	120-200	31.7-52.8	2010	4431
DS 4-12 TS	20-35	22-38.5	9-22	9.9-24.2	1.24-1.56	1.62-2.04	120-200	31.7-52.8	1940	4276
DH 3-12 TS	18-45	19.8-49.6	8-30	8.8-33	0.85-1.07	1.11-1.4	190-315	50.1-83.2	1970	4343
DH 3-17 TS	22-45	24.2-49.6	10-30	11-33	1.25-1.61	1.63-2.11	190-315	50.1-83.2	2460	5423
DH 3-23 TS	26-45	28.6-49.6	14-30	15.4-33	1.65-2.16	2.16-2.83	190-315	50.1-83.2	3020	6657
DH 4-12 TS	22-45	24.2-49.6	10-30	11-33	1.26-1.59	1.65-2.08	190-315	50.1-83.2	2300	5070
DH 4-17 TS	27-45	29.7-49.6	14-30	15.4-33	1.85-2.43	2.42-3.18	190-315	50.1-83.2	2890	6371
DH 4-23 TS	32-45	35.2-49.6	16-30	17.6-33	2.43-3.27	3.18-4.28	190-315	50.1-83.2	3500	7716

NOTE! DH models are equipped with double motors

## OPTIONS.

BLADE THICKNESS	BLADE MODELS	OTHER
8 mm 16 mm 25 mm 35 mm	TS Standard blades TS Axe blades	Extra side Directional valve Drain line eliminator Drain line relief valve









# ALLU APP.

Transform your efficiency and safety with ALLU App. The ALLU App provides an intelligent digital solution for customers and operators to obtain accurate and timely information regarding safe operations at job sites, thereby maximizing the use of the ALLU equipment.



## **YOUR PRODUCTIVITY**

- Notify about the need for maintenance or replacement of wear parts - minimize the downtime
- Real-time guidance for working angle ensures efficiency



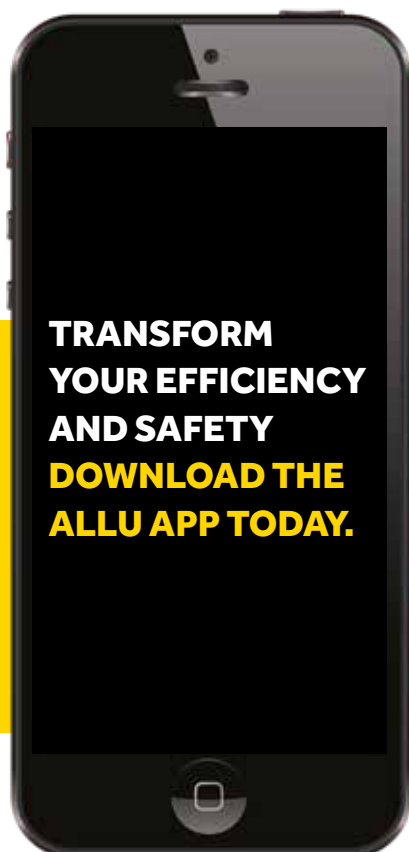
## **YOUR SAFETY**

- Obtain accurate and timely information regarding safe operations at job sites



## **EFFICIENT CUSTOMER SERVICE**

- Receive quick answers to frequently asked questions (FAQs)
- Check the right spare parts and accessories for your product
- Check the warranty information of your product
- Locate your closest ALLU distributor



Search for ALLU on the App Store or Play Store, or scan the QR code to get started.



# SPARE PARTS & ACCESSORIES.

Once you've got your ALLU Transformer attachment, you'll want to ensure its best possible working efficiency. That's where our spare parts and accessories come in. From drums to blades, by choosing our original, high-quality spares, you can guarantee a long and successful life of service from your Transformer.

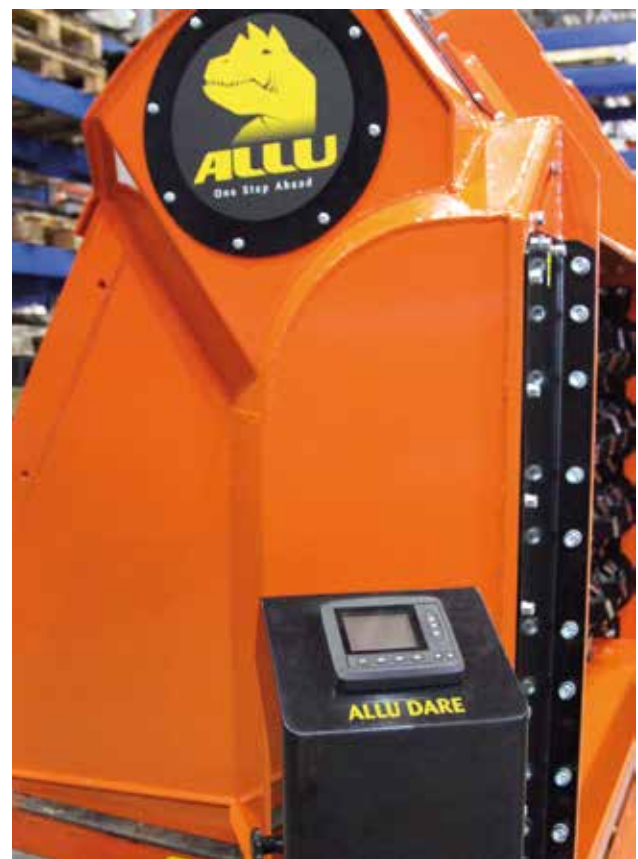
## ALLU DARE DATA REPORTING SYSTEM.



Each ALLU Transformer M-Series attachment comes with a Dare (Data Reporting) system that is placed inside the base machine cabin. The system records performance and process data for analysing and optimising working efficiency. It also reports on hydraulics, time elapsed, parts temperature and bucket angle and performance. As a further feature the Dare system assists the operator with a real-time link to the service station, minimising maintenance downtime.

### Production data from the display unit:

- Bucket count
- Processing time & total working time
- Processed tons



## ALLU DRUMS.



**Screening and crushing  
XHD 25/40/60**

- changeable blades



**Stabilising, mixing,  
aerating and crushing  
(X75 and X100)**

- changeable blades



**TS Screening drum**

- changeable blades
- change of fragment size without dismantling drums



**TS Crushing drum**

- changeable blades
- change of fragment size without dismantling drums

## ALLU BLADES.



**TS Standard blade**

For all screening applications.



**TS Axe blade**

For crushing applications.



**Universal blade 40 XHD**

For most applications and materials. Good durability.



**Universal blade 60 XHD**

For most applications and materials. Good durability.

\*All TS blades available in 8mm, 16mm, 25mm, 35mm



**Long blade 40 XHD**

Special blade for screening and aerating compost and other soft materials to increase capacity.



**Long blade 60 XHD**

Special blade for screening and aerating compost and other soft materials to increase capacity.



**X blade**

For stabilising, mixing, aerating and crushing. Suitable for X75 and X100 drums.





---

# AFTER SALES & SUPPORT.

Your versatile ALLU Transformer doesn't just come with inbuilt efficiency. It also comes with unrivalled aftersales support. No matter what the issue, our team is on hand to offer all the help you need in getting the most out of your equipment. We're just a phone call or email away.

## TECHNICAL SUPPORT.



Having built the unique Transformer technology, there's no one better than our technical experts to offer their support. From getting started for the first time, to pushing your Transformer to its limits, we can freely advise. It's very unlikely that anything will go wrong with your equipment, but it's good to know we're here all the same.

## TRAINING.



By providing training and sharing our information we can help to improve the skills of your workforce and advance the industry as a whole. Overseen by our highly-experienced team, we help you to achieve maximum levels of efficiency through technical improvement, new technology and enhanced operating practices.



**SUPPORT.™**

## SERVICE & MAINTENANCE.



To complement our unique Transformer equipment, we offer a wide selection of service and maintenance procedures. Whether it's inspection or troubleshooting, the ALLU team is always happy to lend their support. And with planned preventative maintenance, customers can get all the advice needed to keep their machines fully optimised and working at maximum capacity.

## REFURBISHMENT.



Why replace your equipment when you refurbish or repair it. No equipment is faultless, but sometimes it's only a small part that needs attention. A little fine-tuning here. The odd upgrade there. And that's where we'll help. At ALLU, we're all for saving our customers money. Your business is our business – and we're determined to see you right.



**SUPPORT.™**







**TRANSFORMING MORE  
THAN JUST PROFITS.**

